



MARVINS
ESTATE AGENTS



BUILDING PLOT ADJACENT SOMERTON FARM COTTAGE NEWPORT ROAD, COWES, PO31 8PE

£155,000

Superb Self-Build Opportunity – Building Plot with Planning Consent. Ref No 24/01632/FUL.

A rare opportunity to acquire a building plot with full consent for the construction of a detached three-bedroom cottage, ideally situated just minutes from the bustling town of Cowes. Set within surrounding gardens and benefiting from off-road parking, this plot offers the perfect canvas to create a bespoke home tailored to your lifestyle.

The approved plans feature a thoughtfully designed layout, including:

Spacious lounge

Open-plan kitchen/dining room

Handy utility room

Convenient cloakroom

Family bathroom and en-suite shower room to the master bedroom

Located just a short drive from Cowes' vibrant high street, with its wide range of shops, restaurants, and amenities, the plot also enjoys easy access to the high-speed passenger ferry to Southampton—ideal for commuters or regular mainland travellers.

Whether you're a self-builder or looking for a hands-on development project, this is an excellent opportunity to build your dream home with your own personal input and design flair.

Don't miss out on this exciting chance to create a unique home in a desirable location.

COWES OFFICE

41a High Street, Cowes, Isle of Wight, PO31 7RS

T: 01983 292114

E: cowes@marvins.co.uk

WWW.MARVINS.CO.UK

BUILDING PLOT ADJACENT SOMERTON FARM COTTAGE NEWPORT ROAD, COWES,

SERVICE ARRANGEMENTS

Water: A private mains supply (to Somerton Farm Cottage) is nearby which the purchaser can connect to. Standing and Volumetric charges will be sub-metered, apportioned and shared between the property and Somerton Farm Cottage.

Electricity: A company mains supply is situated nearby which the purchaser can connect to.

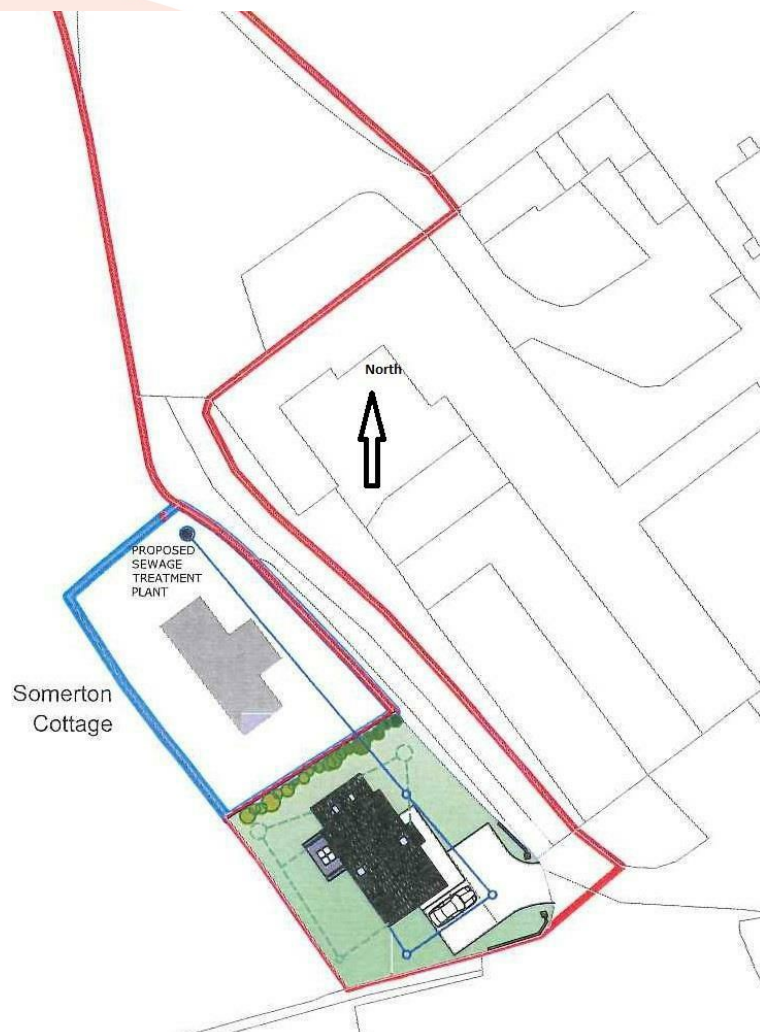
Gas: There is no mains gas. It is anticipated that the new dwelling will be heated by electricity (air source heat pump), bulk gas or oil.

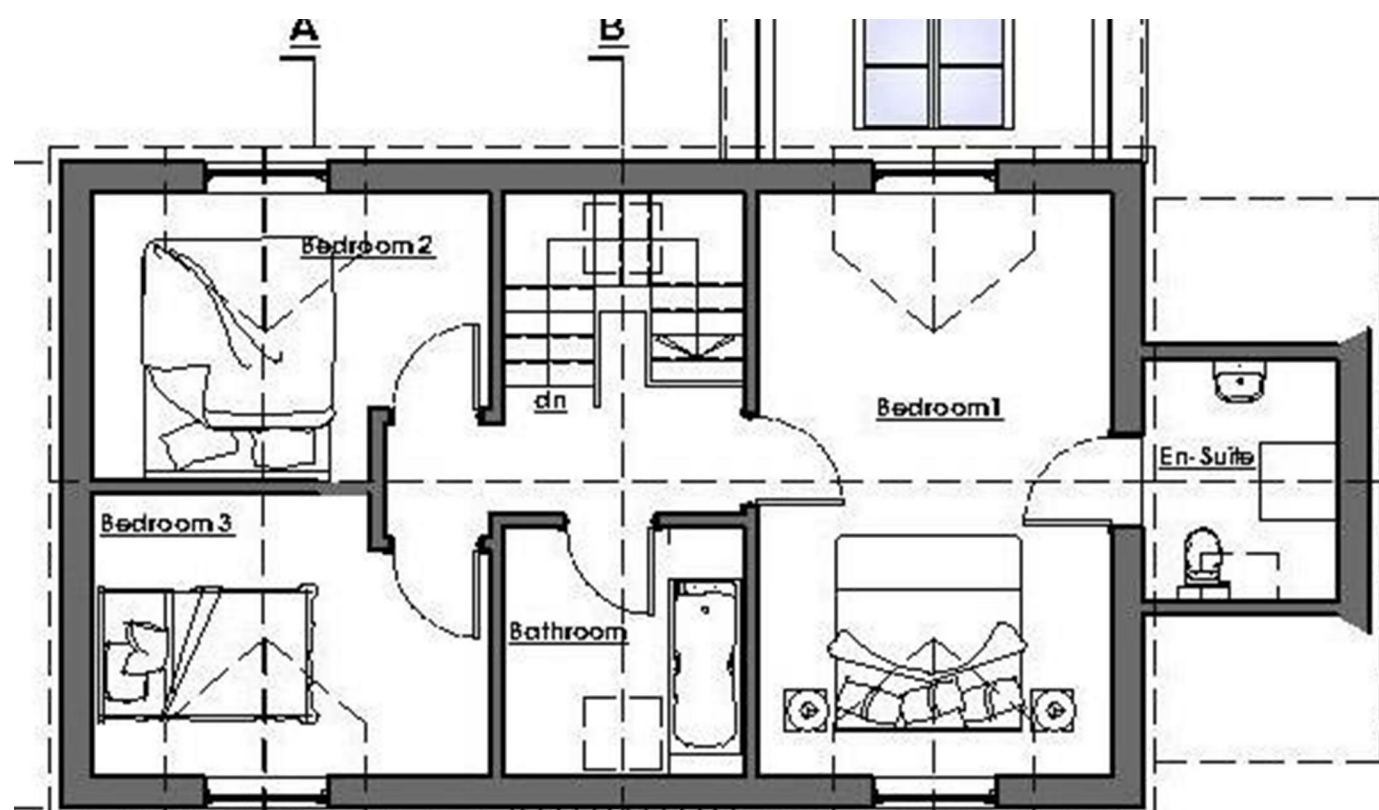
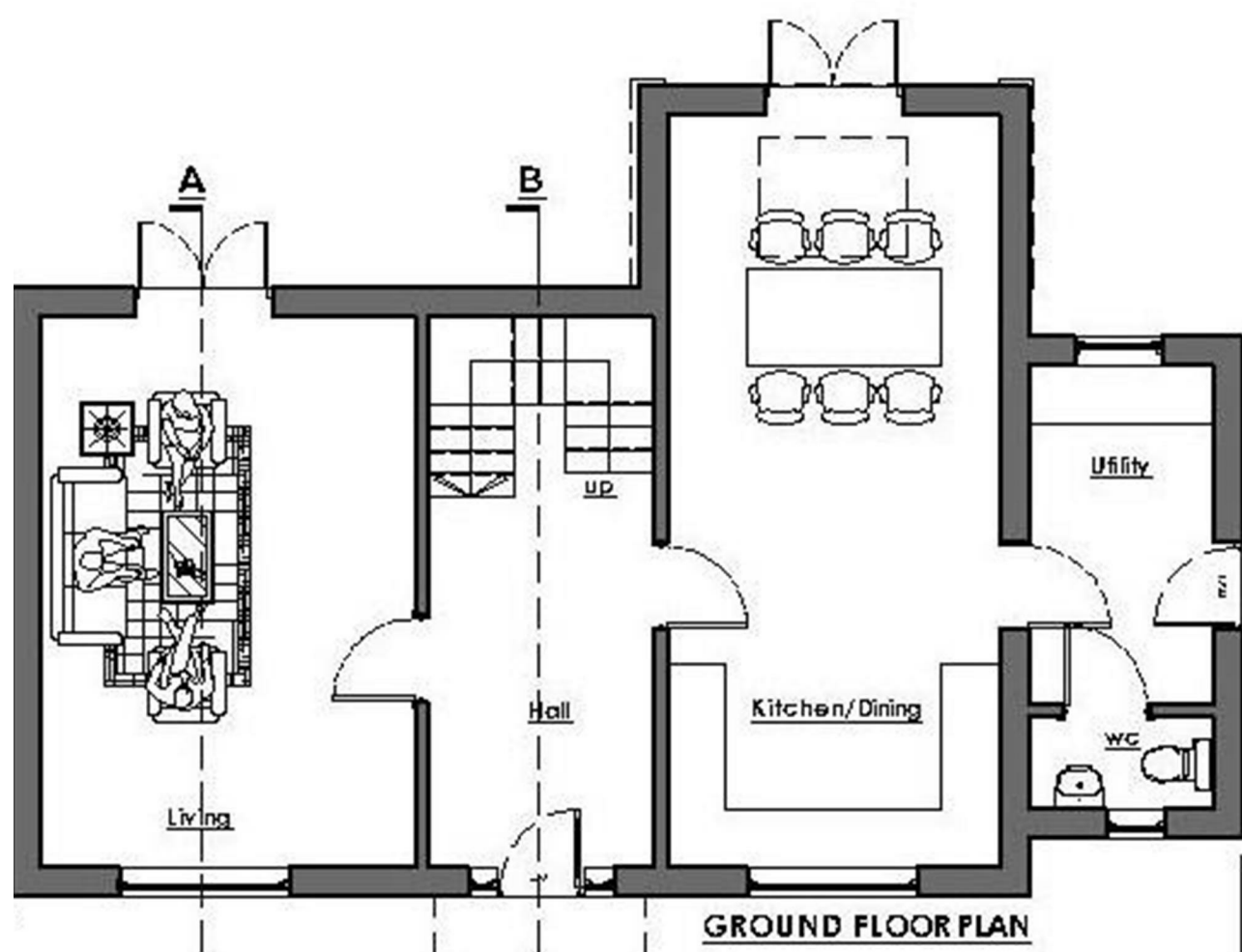
Foul Drainage: The property is to drain to a new Package Sewage Treatment Plant (PSTP) shared with

Somerton Farm Cottage. The cost of installation and ongoing maintenance/emptying will be shared between the two properties. An application has been made to change the PSTP to an alternative make, which has been accepted by the Isle of Wight Council.

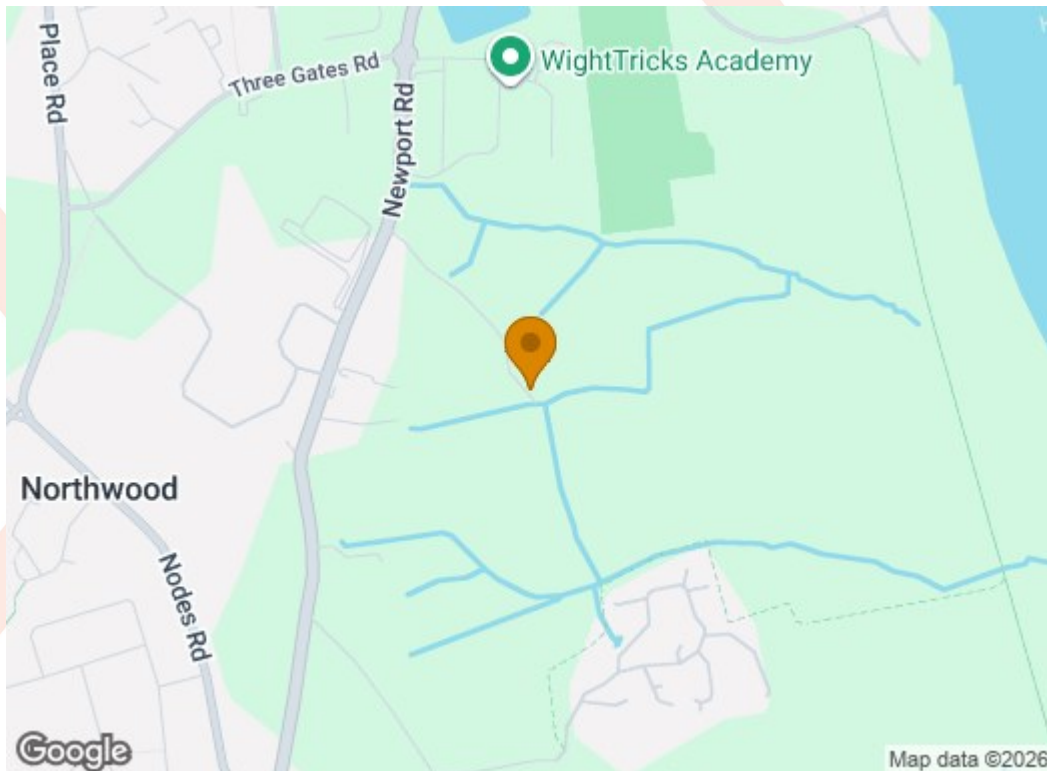
NEARBY PLANNING

The property is adjacent to a field which is subject to an Outline Planning Application for residential development (granted September 2025). Details are available on the Isle of Wight Council's website Planning Application Search Ref: 22/01720/OUT. The indicative layout plans show a significant undeveloped area between the property and the new houses which should provide ample buffering and screening.









You may download, store and use the material for your own personal use and research. You may not republish, retransmit, redistribute or otherwise make the material available to any party or make the same available on any website, online service or bulletin board of your own or of any other party or make the same available in hard copy or in any other media without the website owner's express prior written consent. The website owner's copyright must remain on all reproductions of material taken from this website.

COWES OFFICE

41a High Street, Cowes, Isle of Wight, PO31 7RS
T: 01983 292114
E: cowes@marvins.co.uk

WWW.MARVINS.CO.UK